



InfiniBand Trade Association Integrators' List

April 2020



IBTA InfiniBand Integrators' List April 2020

Manufacturer	Description	Model	Type	Speed	FW	SW
NVIDIA	ConnectX®-4 VPI, EDR IB (100Gb/s) and 100GbE Dual-port QSFP28, PCIe3.0 x16	MCX456A-ECAT	HCA	EDR	12.27.1016	MLNX_OFED_LINUX 5.0-2.1.8.0
NVIDIA	ConnectX®-5 VPI, EDR IB (100Gb/s) and 100GbE Dual-port QSFP28, PCIe4.0 x16	MCX556A-EDAT	HCA	EDR	16.27.2008	MLNX_OFED_LINUX 5.0-2.1.8.0
NVIDIA	ConnectX®-6 VPI adapter card, HDR IB (200Gb/s) and 200GbE, dual-port QSFP56, Socket Direct 2x PCIe3.0 x16	MCX654106A-HCAT	HCA	HDR	20.27.1016	MLNX_OFED_LINUX 5.0-2.1.8.0
NVIDIA	Switch-IB 2 based EDR InfiniBand 1U Switch, 36 QSFP28 ports, x86 dual core	MSB7800-ES2F	Switch	EDR	15.2007.0300	3.9.0300
NVIDIA	NVIDIA® Quantum(TM) HDR InfiniBand Switch, 40 QSFP56 ports, 2 Power Supplies (AC), x86 dual core	MQM8700-HS2F	Switch	HDR	27.2007.0300	3.9.0300
NetApp	Dual Controllers iSER EDR Target	E5700	iSER Target	EDR	8.52	11.50.2P1
Software						
Software	Versions	Diagnostic Software				
Operating System	Cent OS 7.7.1908	ibutils2		MLNX OFED 5.0-2.1.8.0		
NVIDIA OFED	MLNX OFED 5.0-2.1.8.0	Compliance Test Suite v 1.0.67				
Open MPI	Open MPI 3.1.4					
Benchmark	Intel MPI Benchmarks	Benchmarks Performed				
Test Plan	Software Forge IBTA MOI Suite	PingPong		Gather		
Duration	2-5 Minutes	PingPing		Gatherv		
		Sendrecv		Scatter		
		Exchange		Scatterv		
Conditions for Passing Testing		Allreduce		Alltoall		
Link Width	Link width is @ expected width - i.e. 1x,4x, etc	Reduce		Alltoallv		
Link Speed	Link speed is @ expected speed - e.g. 100 GbE	Reduce_scatter		Bcast		
Errors	There must be no errors recorded during any test phases	Allgather		Barrier		
MPI Test	The MPI Benchmark must run to completion	Allgatherv				
Compliance	Devices must pass all Compliance Tests					

NVIDIA HCAs		Model	MCX456A-ECAT	MCX556A-EDAT	MCX654106A-HCAT
		Date	2020-04-30-01	2020-04-30-01	2020-04-29-03
		Firmware Version	12.27.1016	16.27.2008	20.27.1016
		Overall Results	Pass	Pass	Pass
Test Class	Name	Number	Results	Results	Results
Management	ResponseTimeValue	C13-013	Pass	Pass	Pass
	ResponseTimeValue - Single Packet	C13-014_01	Pass	Pass	Pass
Subnet Management	No M_Key Checking	C14-015	Pass	Pass	Pass
	M_Key Checking - SubnGet	C14-016_Get	Pass	Pass	Pass
	M_Key Checking - SubnSet	C-14-016_Set	Pass	Pass	Pass
	M_Key Lease Period Timer - Part 1	C-14-017	Pass	Pass	Pass
	M_Key Lease Period Timer - Part 2		Pass	Pass	Pass
	M_Key Lease Period Timer - Part 3		Pass	Pass	Pass
	M_Key Lease Period Timer - Part 4		Pass	Pass	Pass
	M_Key Lease Period Timer - Part 5		Pass	Pass	Pass
	M_Key Violation Counter	C14-018	Pass	Pass	Pass
	M_Key Components in NVRAM	C14-023	Pass	Pass	Pass
	Node Description	C14-024#02	Pass	Pass	Pass
	NodeInfo	C14-024#03	Pass	Pass	Pass
	GUIDInfo	C14-024#05	Pass	Pass	Pass
	PortInfo xCA - Part 1	C14-024#06_CA_01	Pass	Pass	Pass
	PortInfo xCA - Part 2	C14-024#06_CA_02	Pass	Pass	Pass
	PortInfo xCA - Part 3	C14-024#06_CA_03	Pass	Pass	Pass
	PortInfo xCA - Part 4	C14-024#06_CA_04	N/A	N/A	N/A
	PortInfo xCA - Part 5	C14-024#06_CA_05	N/A	N/A	N/A
	PortInfo xCA - Part 6	C14-024#06_CA_06	Pass	Pass	Pass
	PortInfo LocalPortNum	C14_024_06_LocalPortNum	Pass	Pass	Pass
	P_Key - Part 1	C14-024#07_01	Pass	Pass	Pass
	SLToVL Mapping - Part 1	C14-024#08_01	Pass	Pass	Pass
	SLToVL Mapping - Part 2	C14-024#08_02	N/A	N/A	N/A
	VLArbitration - CA	C14-024#09_xCA	Pass	Pass	Pass
LedInfo	C14-024#15	Pass	Pass	Pass	
Subnet Manager	SMinfo - Supported	C14-024#13-01	Pass	Pass	Pass
	SMinfo - Unsupported	C14-024#13-03	N/A	N/A	N/A
Subnet Administration	SubnAdminGet(ServiceRecord)	C15-0.1.012#15	Pass	Pass	Pass
	SubnAdminGet(PathRecord)	C15-0.1.012#17.01	Pass	Pass	Pass
	SubnAdminGet(PathRecord) - Part 1	C15-0.1-012#17.02 - Part 1	Pass	Pass	Pass
	SubnAdminGet(PathRecord) - Part 2	C15-0.1-012#17.02 - Part 2	Pass	Pass	Pass
	SubnAdminGet(PathRecord) - Part 3	C15-0.1-012#17.02 - Part 3	Pass	Pass	Pass
	SM-SA Validation	SM-SA Validation	Pass	Pass	Pass

NVIDIA Switches		Model	MSB7800-ES2F	MQB8700-HS2F
		Date	2020-05-13-03	2020-05-13-01
		Firmware Version	15.2007.0300	27.2007.0300
		Overall Results	Pass	Pass
Test Class	Name	Number	Results	Results
Management	ResponseTimeValue	C13-013	Pass	Pass
	ResponseTimeValue - Single Packet	C13-014_01	Pass	Pass
Subnet Management	No M_Key Checking	C14-015	Pass	Pass
	M_Key Checking - SubnGet	C14-016_Get	Pass	Pass
	M_Key Checking - SubnSet	C-14-016_Set	Pass	Pass
	M_Key Lease Period Timer - Part 1	C-14-017	Pass	Pass
	M_Key Lease Period Timer - Part 2		Pass	Pass
	M_Key Lease Period Timer - Part 3		Pass	Pass
	M_Key Lease Period Timer - Part 4		Pass	Pass
	M_Key Lease Period Timer - Part 5		Pass	Pass
	M_Key Violation Counter	C14-018	Pass	Pass
	M_Key Components in NVRAM	C14-023	Pass	Pass
	Node Description	C14-024#02	Pass	Pass
	NodeInfo	C14-024#03	Pass	Pass
	SwitchInfo - RO	C14-024#04_SW_01	Pass	Pass
	SwitchInfo - Part 1	C14-024#04_SW_02	Pass	Pass
	SwitchInfo - Part 2	C14-024#04_SW_03	Pass	Pass
	GUIDInfo	C14-024#05	Pass	Pass
	PortInfo Switch - Part 1	C14-024#06_SW_01	Pass	Pass
	PortInfo Switch - Part 2	C14-024#06_SW_02	Pass	Pass
	PortInfo Switch - Part 3	C14-024#06_SW_03	N/A	N/A
	PortInfo Switch - Part 4	C14-024#06_SW_04	Pass	Pass
	PortInfo Switch - Part 5	C14-024#06_SW_05	Pass	Pass
PortInfo Switch - Part 6	C14-024#06_SW_06	Pass	Pass	
PortInfo Switch - Part 7	C14-024#06_SW_07	Pass	Pass	
PortInfo LocalPortNum	C14_024_06_LocalPortNum	Pass	Pass	

NVIDIA Switches		Model	MSB7800-ES2F	MQB8700-HS2F
		Date	2020-05-13-03	2020-05-13-01
		Firmware Version	15.2007.0300	27.2007.0300
		Overall Results	Pass	Pass
Test Class	Name	Number	Results	Results
Subnet Management Continued	P_Key - Part 1	C14-024#07_01	Pass	Pass
	P_Key - Part 2	C14-024#07_02	N/A	N/A
	P_Key - Part 3	C14-024#07_03	Pass	Pass
	P_Key - Part 4	C14-024#07_04	Pass	Pass
	P_Key - Part 5	C14-024#07_05	Pass	Pass
	SLToVL Mapping - Part 3	C14-024#08_03	Pass	Pass
	SLToVL Mapping - Part 4	C14-024#08_04	N/A	N/A
	SLToVL Mapping - Part 5	C14-024#08_05	Pass	Pass
	VLArbitation - SW	C14-024#09_SW	Pass	Pass
	LFT - Unsupported	C14-024#10_01	N/A	N/A
	LFT Supported - Valid Ports	C14-024#10_02	Pass	Pass
	LFT Supported - Invalid Ports	C14-024#10_03	Pass	Pass
	Random Forwarding Table	C14-024#11	Pass	Pass
	Mcast Forwarding Table	C14-024#12	Pass	Pass
	LedInfo	C14-024#15	Pass	Pass
Subnet Manager	SMInfo - Supported	C14-024#13-01	Pass	Pass
	SMInfo - Unsupported	C14-024#13-03	N/A	N/A
Subnet Administration	SubnAdminGet(ServiceRecord)	C15-0.1.012#15	Pass	Pass
	SubnAdminGet(PathRecord)	C15-0.1.012#17.01	Pass	Pass
	SubnAdminGet(PathRecord) - Part 1	C15-0.1-012#17.02 - Part 1	Pass	Pass
	SubnAdminGet(PathRecord) - Part 2	C15-0.1-012#17.02 - Part 2	Pass	Pass
	SubnAdminGet(PathRecord) - Part 3	C15-0.1-012#17.02 - Part 3	Pass	Pass
	SM-SA Validation	SM-SA Validation	Pass	Pass

NetApp EDR iSER Target		Model	E5700
		Date	10/29/2019
		Firmware Version	08.52.00.01
		Software Version	11.50.2P1
		Overall Results	Pass
Test Class	Name	Number	Results
Management	ResponseTimeValue	C13-013	Pass
	ResponseTimeValue - Single Packet	C13-014_01	Pass
Subnet Management	No M_Key Checking	C14-015	Pass
	M_Key Checking - SubnGet	C14-016_Get	Pass
	M_Key Checking - SubnSet	C-14-016_Set	Pass
	M_Key Lease Period Timer - Part 1	C-14-017	Pass
	M_Key Lease Period Timer - Part 2		Pass
	M_Key Lease Period Timer - Part 3		Pass
	M_Key Lease Period Timer - Part 4		Pass
	M_Key Lease Period Timer - Part 5		Pass
	M_Key Violation Counter	C14-018	Pass
	M_Key Components in NVRAM	C14-023	Pass
	Node Description	C14-024#02	Pass
	NodeInfo	C14-024#03	Pass
	GUIDInfo	C14-024#05	Pass
	PortInfo xCA - Part 1	C14-024#06_CA_01	Pass
	PortInfo xCA - Part 2	C14-024#06_CA_02	Pass
	PortInfo xCA - Part 3	C14-024#06_CA_03	Pass
	PortInfo xCA - Part 4	C14-024#06_CA_04	N/A
	PortInfo xCA - Part 5	C14-024#06_CA_05	N/A
PortInfo xCA - Part 6	C14-024#06_CA_06	Pass	
Subnet Management Continued	PortInfo LocalPortNum	C14_024_06_LocalPortNum	Pass
	P_Key - Part 1	C14-024#07_01	Pass
	SLToVL Mapping - Part 1	C14-024#08_01	Pass
	SLToVL Mapping - Part 2	C14-024#08_02	N/A
	VLArbitration - CA	C14-024#09_xCA	Pass
	LedInfo	C14-024#15	Pass
Subnet Manager	SMinfo - Supported	C14-024#13-01	N/A
	SMinfo - Unsupported	C14-024#13-03	Pass
Subnet Administration	SubnAdminGet(ServiceRecord)	C15-0.1.012#15	N/A
	SubnAdminGet(PathRecord)	C15-0.1.012#17.01	N/A
	SubnAdminGet(PathRecord) - Part 1	C15-0.1-012#17.02 - Part 1	N/A
	SubnAdminGet(PathRecord) - Part 2	C15-0.1-012#17.02 - Part 2	N/A
	SubnAdminGet(PathRecord) - Part 3	C15-0.1-012#17.02 - Part 3	N/A
	SM-SA Validation	SM-SA Validation	N/A



IBTA Integrators' List

April 2020 **EDR** Compliant Cables



Company Info		Cable Information					Integrators' List	Qualification
Company	Part Number	Width	Len (m)	AWG	Equalization	Type	EDR	Tested at
CONNPRO,Ind.	AIEAF4F4L30TXX	4x	30	N/A	Fiber - Active	QSFP28	Yes	PF36
CONNPRO,Ind.	AIEAF7F7L30TXX	4x	30	N/A	Fiber - Active	QSFP28	Yes	PF36
CONNPRO,Ind.	AIEAF7F7L30TXX	4x	30	N/A	Fiber - Active	QSFP28	Yes	PF37
CONNPRO,Ind.	AIEAF4F4L50TXX	4x	50	N/A	Fiber - Active	QSFP28	Yes	PF36
CONNPRO,Ind.	AIEAF7F7L50TXX	4x	50	N/A	Fiber - Active	QSFP28	Yes	PF36
CONNPRO,Ind.	AIECF4F4L10HXX	4x	100	N/A	Fiber - Active	QSFP28	Yes	PF36
CONNPRO,Ind.	AIECF7F7L10HXX	4x	100	N/A	Fiber - Active	QSFP28	Yes	PF37
CONNPRO,Ind.	RIEF4TF4T10001	4x	1	30	Copper - Unequalized	QSFP28	Yes	PF36
CONNPRO,Ind.	RIEF4TF4T20001	4x	2	30	Copper - Unequalized	QSFP28	Yes	PF36
CONNPRO,Ind.	RIEF4TF4T30003	4x	3	26	Copper - Unequalized	QSFP28	Yes	PF36
CONNPRO,Ind.	RIEF4TF4T30003	4x	3	26	Copper - Unequalized	QSFP28	Yes	PF37
CONNPRO,Ind.	RIHF7TF7T10001	4x	1	30	Copper - Unequalized	QSFP56	Yes	PF36
CONNPRO,Ind.	RIHF7TF7T15001	4x	1.5	30	Copper - Unequalized	QSFP56	Yes	PF36
CONNPRO,Ind.	RIHF7TF7T15001	4x	1.5	30	Copper - Unequalized	QSFP56	Yes	PF37
CONNPRO,Ind.	RIHF7TF7T20003	4x	2	26	Copper - Unequalized	QSFP56	Yes	PF36
CONNPRO,Ind.	RIHF7TF7T20003	4x	2	26	Copper - Unequalized	QSFP56	Yes	PF37
NVIDIA	MFA1A00-E003	4x	3	N/A	Fiber - Active	QSFP28	Yes	PF37
NVIDIA	MFA1A00-E030	4x	30	N/A	Fiber - Active	QSFP28	Yes	PF37
NVIDIA	MFA1A00-E050	4x	50	N/A	Fiber - Active	QSFP28	Yes	PF36
NVIDIA	MFA1A00-E100	4x	100	N/A	Fiber - Active	QSFP28	Yes	PF36
NVIDIA	MFS1S00-H050E	4x	50	N/A	Fiber - Active	QSFP56	Yes	PF37
NVIDIA	MFS1S00-H100E	4x	100	N/A	Fiber - Active	QSFP56	Yes	PF37
NVIDIA	MCP1600-E00AE30	4x	0.5	30	Copper - Unequalized	QSFP28	Yes	PF37
NVIDIA	MCP1600-E001E30	4x	1	30	Copper - Unequalized	QSFP28	Yes	PF37
NVIDIA	MCP1600-E004E26	4x	4	26	Copper - Unequalized	QSFP28	Yes	PF37
NVIDIA	MCP1650-H001E30	4x	1	30	Copper - Unequalized	QSFP56	Yes	PF37
NVIDIA	MCP1650-H01AE30	4x	1.5	30	Copper - Unequalized	QSFP56	Yes	PF37
NVIDIA	MCP1650-H02AE26	4x	2.5	26	Copper - Unequalized	QSFP56	Yes	PF37
NVIDIA	MCP1650-H003E26	4x	3	26	Copper - Unequalized	QSFP56	Yes	PF37



IBTA Integrators' List

April 2020 HDR Compliant Cables



Company Info		Cable Information					Integrators' List	Qualification
Company	Part Number	Width	Len (m)	AWG	Equalization	Type	HDR	Tested at
CONNPRO,Ind.	RIHF7TF7T10001	4x	1	30	Copper - Unequalized	QSFP56	Yes	PF36
CONNPRO,Ind.	RIHF7TF7T15001	4x	1.5	30	Copper - Unequalized	QSFP56	Yes	PF36
CONNPRO,Ind.	RIHF7TF7T15001	4x	1.5	30	Copper - Unequalized	QSFP56	Yes	PF37
CONNPRO,Ind.	RIHF7TF7T20003	4x	2	26	Copper - Unequalized	QSFP56	Yes	PF36
CONNPRO,Ind.	RIHF7TF7T20003	4x	2	26	Copper - Unequalized	QSFP56	Yes	PF37
NVIDIA	MFS1S00-H050E	4x	50	N/A	Fiber - Active	QSFP56	Yes	PF37
NVIDIA	MFS1S00-H100E	4x	100	N/A	Fiber - Active	QSFP56	Yes	PF37
NVIDIA	MCP1650-H001E30	4x	1	30	Copper - Unequalized	QSFP56	Yes	PF37
NVIDIA	MCP1650-H01AE30	4x	1.5	30	Copper - Unequalized	QSFP56	Yes	PF37
NVIDIA	MCP1650-H002E26	4x	2	26	Copper - Unequalized	QSFP56	Yes	PF37
NVIDIA	MCP1650-H02AE26	4x	2.5	26	Copper - Unequalized	QSFP56	Yes	PF37



IBTA Integrators' List

April 2020 **EDR** Interoperability List



Hardware used to test Interoperability

Interop Legend
MCX556A-EDAT ↔ MSB7800-ES2F ↔ Cable ↔ MQM8700-HS2F ↔ MCX653106A-HCAT
MCX456A ↔ MSB7800-ES2F ↔ Cable ↔ MCX653106A-HCAT
MCX556A ↔ Cable ↔ MCX653106A-HCAT
MCX653106A-HCAT ↔ MSB7800-ES2F ↔ Cable ↔ MQM8700-HS2F ↔ MCX653106A-HCAT

Conditions for passing Interop	
Link Width	Link width is @ expected width - i.e. 1x,4x, etc
Link Speed	Link speed is @ expected speed - i.e. FDR
Link Recovery	There must be no errors during the MPI Run
Port Receive Errors	There must be no errors during the MPI Run
Symbol Errors	There must be no errors during the MPI Run
Port xmit Discard	There must be no discards during the MPI Run
MPI Test	The MPI test must run to completion without error

Manufacturer	Description of Hardware	Model	Type	HW	FW	SW	Speed	Status
NVIDIA	ConnectX@-3 VPI card, 4X QSFP 56Gb/s	MCX354A-FCCT	HCA		2.42.5000	5.0-2.1.8.0	FDR	Compliant
NVIDIA	ConnectX-4 VPI adapter card, EDR IB (100Gb/s) and 100GbE, dual-port QSFP28	MCX456A-ECAT	HCA	A2	12.27.1016	5.0-2.1.8.0	EDR	Compliant
NVIDIA	ConnectX@-5 Ex VPI adapter card, EDR IB (100Gb/s) and 100GbE, dual-port QSFP28	MCX556A-EDAT	HCA	AA	16.27.2008	5.0-2.1.8.0	EDR	Compliant
NVIDIA	ConnectX@-6 VPI adapter card, HDR IB (200Gb/s) and 200GbE, dual-port QSFP56	MCX653106A-HCAT	HCA	A5	20.27.1016	5.0-2.1.8.0	HDR	Compliant
NVIDIA	SwitchX@ EDR Switch, 36 QSFP ports. Managed	MSB7800-ES2F	Switch	AB	15.2007.0300	3.9.0300	EDR	Compliant
NVIDIA	NVIDIA® Quantum(TM) HDR InfiniBand Switch, 40 QSFP56 ports	MQM8700-HS2F	Switch	A6	27.2007.0300	3.9.0300	HDR	Compliant

Software Used to Test Interoperability

Software	Versions
Operating System	CentOS 7.7-1908
OFED Version	MLNX_OFED_LINUX-5.0-2.1.8.0
Open MPI Used	Open MPI 3.1.4
Open MPI Documentation	https://www.open-mpi.org/doc/
Intel Benchmarks	https://software.intel.com/en-us/imb-user-guide
Test Plan version	IB Interop Testing MOI-2018-03-12.pdf
Test Duration	3-15 minutes

Open MPI Intel Benchmark Tests	
PingPong	Gather
PingPing	Gatherv
Sendrecv	Scatter
Exchange	Scatterv
Allreduce	Alltoall
Reduce	Alltoallv
Reduce_scatter	Bcast
Allgather	Barrier
Allgatherv	



IBTA Integrators' List

April 2020 **EDR** Interoperability List



Company Info		Cable Information					EDR Interop				Qualification
Company	Part Number	Width	Len (m)	AWG	Equalization	Connector Type	MSB7800-SW MQM8700-SW	MSB7800-SW MCX653A-HCA	MCX556A-HCA MCX653A-HCA	MSB7800-SW MQM8700-SW	Tested at Plugfest
CONNPRO,Ind.	AIEAF4F4L30TXX	4x	30	N/A	Fiber - Active	QSFP28	NT	NT	NT	NT	PF36
CONNPRO,Ind.	AIEAF7F7L30TXX	4x	30	N/A	Fiber - Active	QSFP28	NT	NT	NT	NT	PF36
CONNPRO,Ind.	AIEAF7F7L30TXX	4x	30	N/A	Fiber - Active	QSFP28	Yes	Yes	Yes	Yes	PF37
CONNPRO,Ind.	AIEAF4F4L50TXX	4x	50	N/A	Fiber - Active	QSFP28	NT	NT	NT	NT	PF36
CONNPRO,Ind.	AIEAF7F7L50TXX	4x	50	N/A	Fiber - Active	QSFP28	NT	NT	NT	NT	PF36
CONNPRO,Ind.	AIECF4F4L10HXX	4x	100	N/A	Fiber - Active	QSFP28	NT	NT	NT	NT	PF36
CONNPRO,Ind.	AIECF7F7L10HXX	4x	100	N/A	Fiber - Active	QSFP28	Yes	Yes	Yes	Yes	PF37
CONNPRO,Ind.	RIEF4TF4T10001	4x	1	30	Copper - Unequalized	QSFP28	NT	NT	NT	NT	PF36
CONNPRO,Ind.	RIEF4TF4T20001	4x	2	30	Copper - Unequalized	QSFP28	NT	NT	NT	NT	PF36
CONNPRO,Ind.	RIEF4TF4T30003	4x	3	26	Copper - Unequalized	QSFP28	NT	NT	NT	NT	PF36
CONNPRO,Ind.	RIEF4TF4T30003	4x	3	26	Copper - Unequalized	QSFP28	Yes	Yes	Yes	Yes	PF37
CONNPRO,Ind.	RIHF7TF7T10001	4x	1	30	Copper - Unequalized	QSFP56	NT	NT	NT	NT	PF36
CONNPRO,Ind.	RIHF7TF7T15001	4x	1.5	30	Copper - Unequalized	QSFP56	NT	NT	NT	NT	PF36
CONNPRO,Ind.	RIHF7TF7T15001	4x	1.5	30	Copper - Unequalized	QSFP56	Yes	Yes	Yes	Yes	PF37
CONNPRO,Ind.	RIHF7TF7T20003	4x	2	26	Copper - Unequalized	QSFP56	NT	NT	NT	NT	PF36
CONNPRO,Ind.	RIHF7TF7T20003	4x	2	26	Copper - Unequalized	QSFP56	Yes	Yes	Yes	Yes	PF37
NVIDIA	MFA1A00-E003	4x	3	N/A	Fiber - Active	QSFP28	Yes	Yes	Yes	Yes	PF37
NVIDIA	MFA1A00-E030	4x	30	N/A	Fiber - Active	QSFP28	Yes	Yes	Yes	Yes	PF37
NVIDIA	MFA1A00-E050	4x	50	N/A	Fiber - Active	QSFP28	NT	NT	NT	NT	PF36
NVIDIA	MFA1A00-E100	4x	100	N/A	Fiber - Active	QSFP28	NT	NT	NT	NT	PF36
NVIDIA	MFS1S00-H050E	4x	50	N/A	Fiber - Active	QSFP56	NT	NT	NT	NT	PF37
NVIDIA	MFS1S00-H100E	4x	100	N/A	Fiber - Active	QSFP56	NT	NT	NT	NT	PF37
NVIDIA	MCP1600-E00AE30	4x	0.5	30	Copper - Unequalized	QSFP28	Yes	Yes	Yes	Yes	PF37
NVIDIA	MCP1600-E001E30	4x	1	30	Copper - Unequalized	QSFP28	Yes	Yes	Yes	Yes	PF37
NVIDIA	MCP1600-E004E26	4x	4	26	Copper - Unequalized	QSFP28	Yes	Yes	Yes	Yes	PF37
NVIDIA	MCP1650-H001E30	4x	1	30	Copper - Unequalized	QSFP56	Yes	Yes	Yes	Yes	PF37
NVIDIA	MCP1650-H01AE30	4x	1.5	30	Copper - Unequalized	QSFP56	Yes	Yes	Yes	Yes	PF37
NVIDIA	MCP1650-H02AE26	4x	2.5	26	Copper - Unequalized	QSFP56	Yes	Yes	Yes	Yes	PF37
NVIDIA	MCP1650-H003E26	4x	3	26	Copper - Unequalized	QSFP56	Yes	Yes	Yes	Yes	PF37



IBTA Integrators' List

April 2020 HDR Interoperability List



Hardware used to test Interoperability

Interop Legend

MCX653106A-HCAT ↔ **Cable** ↔ MQM8700-HS2F ↔ MCX653106A-HCAT

Conditions for passing Interop

Link Width	Link width is @ expected width - i.e. 1x,4x, etc
Link Speed	Link speed is @ expected speed - i.e. FDR
Link Recovery	There must be no errors during the MPI Run
Port Receive Errors	There must be no errors during the MPI Run
Symbol Errors	There must be no errors during the MPI Run
Port xmit Discard	There must be no discards during the MPI Run
MPI Test	The MPI test must run to completion without error

Manufacturer	Description of Hardware	Model	Type	HW	FW	SW	Speed	Status
NVIDIA	ConnectX®-6 VPI adapter card, HDR IB (200Gb/s) and 200GbE, dual-port QSFP56	MCX653A-HCAT	HCA	A5	20.27.1016	5.0-2.1.8.0	HDR	Compliant
NVIDIA	NVIDIA® Quantum(TM) HDR InfiniBand Switch, 40 QSFP56 ports	MQM8700-HS2F	Switch	A6	27.2007.0300	3.9.0300	HDR	Compliant

Software Used to Test Interoperability

Software	Versions
Operating System	CentOS 7.7-1908
OFED Version	MLNX_OFED_LINUX-5.0-2.1.8.0
Open MPI Used	Open MPI 3.1.4
Open MPI Documentation	https://www.open-mpi.org/doc/
Intel Benchmarks	https://software.intel.com/en-us/imb-user-guide
Test Plan version	IB Interop Testing MOI-2018-03-12.pdf
Test Duration	3-15 minutes

Open MPI Intel Benchmark Tests

PingPong	Gather
PingPing	Gatherv
Sendrecv	Scatter
Exchange	Scatterv
Allreduce	Alltoall
Reduce	Alltoallv
Reduce_scatter	Bcast
Allgather	Barrier
Allgatherv	



IBTA Integrators' List

April 2020 HDR Interoperability List



Company Info		Cable Information					HDR Interop	Qualification
Company	Part Number	Width	Len (m)	AWG	Equalization	Connector Type	MQM8700-SW MCX653A-HCA	Tested at Plugfest
CONNPRO,Ind.	RIHF7TF7T10001	4x	1	30	Copper - Unequalized	QSFP56	NT	PF36
CONNPRO,Ind.	RIHF7TF7T15001	4x	1.5	30	Copper - Unequalized	QSFP56	NT	PF36
CONNPRO,Ind.	RIHF7TF7T15001	4x	1.5	30	Copper - Unequalized	QSFP56	Yes	PF37
CONNPRO,Ind.	RIHF7TF7T20003	4x	2	26	Copper - Unequalized	QSFP56	NT	PF36
CONNPRO,Ind.	RIHF7TF7T20003	4x	2	26	Copper - Unequalized	QSFP56	Yes	PF37
NVIDIA	MFS1S00-H050E	4x	50	N/A	Fiber - Active	QSFP56	Yes	PF37
NVIDIA	MFS1S00-H100E	4x	100	N/A	Fiber - Active	QSFP56	Yes	PF37
NVIDIA	MCP1650-H001E30	4x	1	30	Copper - Unequalized	QSFP56	Yes	PF37
NVIDIA	MCP1650-H01AE30	4x	1.5	30	Copper - Unequalized	QSFP56	Yes	PF37
NVIDIA	MCP1650-H002E26	4x	2	26	Copper - Unequalized	QSFP56	Yes	PF37
NVIDIA	MCP1650-H02AE26	4x	2.5	26	Copper - Unequalized	QSFP56	Yes	PF37

InfiniBand Trade Association

Plugfest 37 Test Equipment Providers

The **IBTA** wishes to thank **Anritsu, Keysight, Software Forge, Ace Unitech** and **Wilder Technologies** for providing the following test equipment and software for the IBTA Plugfests. All this equipment is provided free of charge for the benefit of the InfiniBand community and the IBTA Plugfests would not be possible without this equipment.

Anritsu - Signal Quality Analyzer MP1900A

The MP1900A Signal Quality Analyzer is an expandable modular NRZ and PAM4 BERT supporting wideband bit rates from 2.4Gb/s to 128Gb/s for versatile signal integrity analysis applications. Supports IBTA and IEEE rates such as HDR (PAM4 26.56Gbaud x4), EDR (NRZ 25.78Gb/s x4). Supports all 200G/400G PAM4 and NRZ rates defined by IBTA, IEEE, OIF-CEI, Fiber Channel standards.

MP1900A System Features:

- Pulse Pattern Generator supports output of high-quality / low jitter NRZ and PAM4 waveforms. Integrated emphasis and flexible pattern generation for PAM4 applications.
- Error Detector with high input sensitivity and integrated clock recovery. Includes signal analysis tools such as Bathtub, Jitter Decomposition, and Eye Contour. Integrated real-time PAM4 decoding for BER/SER and powerful jitter tolerance applications.
- Integrated Jitter Modulation for SJ/RJ/BUJ/SSC generation and supporting Jitter Tolerance tests.
- Integrated Noise injection to address standards-based stressed signal requirements. (CM, DM, White)

IBTA Application:

- Supports HDR, EDR, FDR, QDR Active Cable Time Domain Testing (ATD).
- Multi-channel PPG to create victim and aggressor traffic.
- Jitter Modulation Source to inject jitter onto the victim channel to create stressed conditions.
- Multi-Channel error detection for BER analysis during stressed receiver testing.

MP1900A Literature:

1. <https://www.anritsu.com/en-US/test-measurement/products/MP1900A>
2. <https://www.anritsu.com/en-US/test-measurement/support/downloads/product-introductions/dwl19526>
<https://www.anritsu.com/en-US/test-measurement/support/downloads/brochures-datasheets-and-catalogs/dwl18627>



Anritsu - Signal Quality Analyzer MP1800A

The MP1800A Signal Quality Analyzer is an expandable plug-in modular BERT supporting wideband bit rates from 0.1 to 32.1 Gb/s for versatile signal integrity analysis applications, such as InfiniBand EDR (26G x 4), 100 GbE (25G x 4), OTU-4 (28G x 4), 32G DP-QPSK, CEI-28G and 32G FC.

MP1800A System Features:

- Pulse Pattern Generator (PPG) supports output of high-quality, low jitter, and high amplitude signals.
- Error Detector (ED) with high input sensitivity supporting signal analysis, such as Bathtub Jitter and Eye Diagram Measurements. 32G Clock Recovery.
- Error Detector Bathtub measurements for jitter (J2 & J9) measurements.
- Jitter Modulation for SJ/RJ/BUJ/SSC generation and supporting Jitter Tolerance tests.

IBTA Application:

- QDR, FDR and EDR Active Cable Time Domain Testing (ATD).
- Multi-channel PPG used to create victim and all aggressor traffic.
- Jitter Modulation Source is used to inject jitter onto the victim channel to create stressed conditions.
- Multi-Channel error detection for BER analysis of stressed receiver testing.

MP1800A Literature:

1. <https://www.anritsu.com/en-US/test-measurement/products/MP1800A>
2. <https://www.anritsu.com/en-US/test-measurement/support/downloads/brochures-datasheets-and-catalogs/dw19786>



MP1800A Front View

Anritsu - MP1825B - 4Tap Emphasis

Combined use of the MP1800A and the MP1825B 4Tap Emphasis generates 2 and 3-tap pre-emphasis signals for high speed interconnects up to 32.1 Gb/s, such as InfiniBand EDR (26G x 4), CEI-28G and 32G FC, as well as 4-tap signals.

As a compact remote unit, the MP1825 4Tap Emphasis can be placed very close to the DUT, keeping cables short and preserving high signal quality. Precision signal integrity analysis is supported by pre-emphasis. In addition, MP1825 supports highly accurate Jitter Tolerance measurements due to transparency of the clock and data paths through the unit.

IBTA Application:

- QDR, FDR and EDR Active Cable Time Domain Testing (ATD)
- Precise adjustment of victim input signal characteristics such as DDWPS and Eye Mask parameters

MP1825B - 4Tap Emphasis Literature:

1. <http://www.anritsu.com/en-US/Products-Solutions/Products/MP1825B.aspx>
2. <http://www.anritsu.com/en-US/Downloads/Brochures-Datasheets-and-Catalogs/Brochure/DWL8910.aspx>



MP1825B Front View

Anritsu – MP2110A- BERTWave

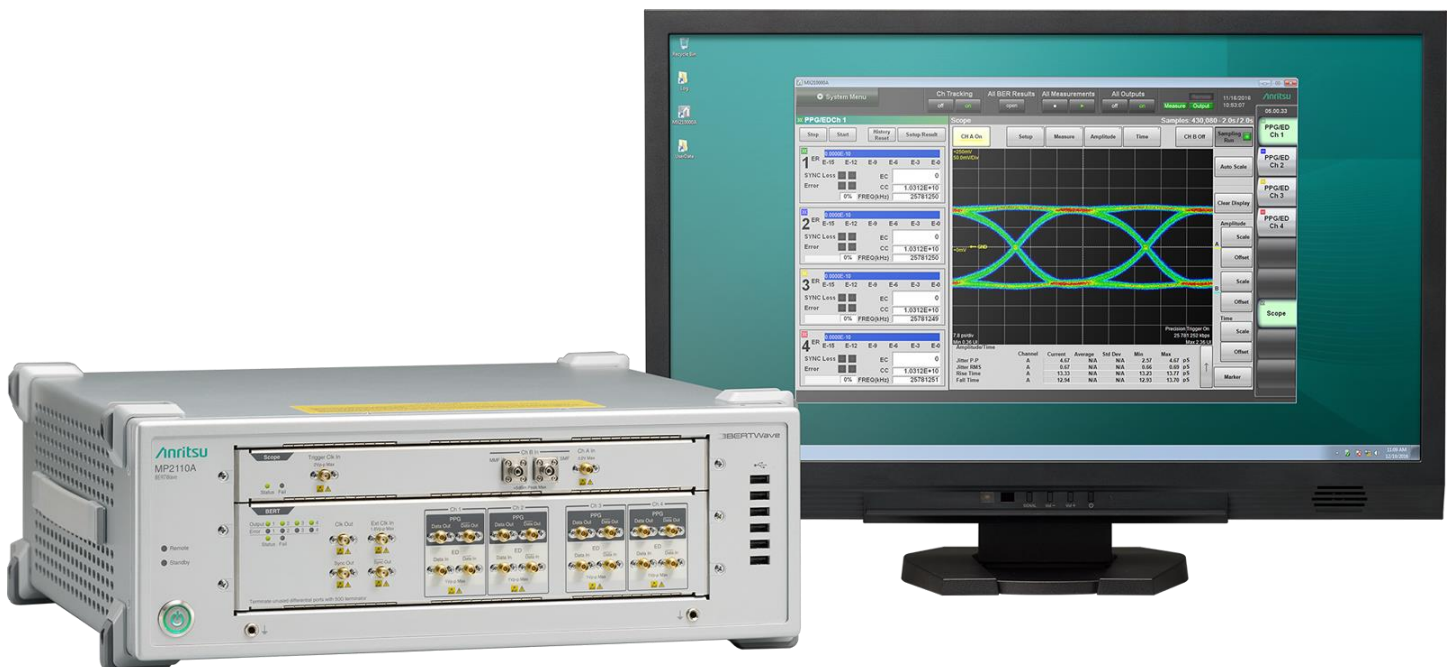
The MP2110A BERTWave supports simultaneous 4 channel pattern generation and BER measurements with sampling scope eye pattern analysis for evaluating optical and electrical signals. Enhanced sampling scope measurements available with Jitter Analysis and PAM4 Analysis software.

IBTA Application:

- Aggressor traffic for HDR, EDR, FDR, QDR ATD Testing
- Simultaneous 4 channel BER measurements for EDR, FDR, QDR ATD Testing
- 40GHz BW Sampling Scope with Jitter Analysis and Precision Trigger
- Eye Mask functions for DUT measurements
- Jitter Decomposition (TJ, DJ, J2, J9, DDWPS) for DUT measurements

MP2110A - BERTWave Literature:

1. <https://www.anritsu.com/en-US/test-measurement/products/mp2110a>
2. <https://www.anritsu.com/en-US/test-measurement/support/downloads/brochures-datasheets-and-catalogs/dwl18237>
3. <https://www.anritsu.com/en-US/test-measurement/support/downloads/brochures-datasheets-and-catalogs/dwl18236>



MP2110A Front View with External Monitor

Anritsu – MP2100B- BERTWave

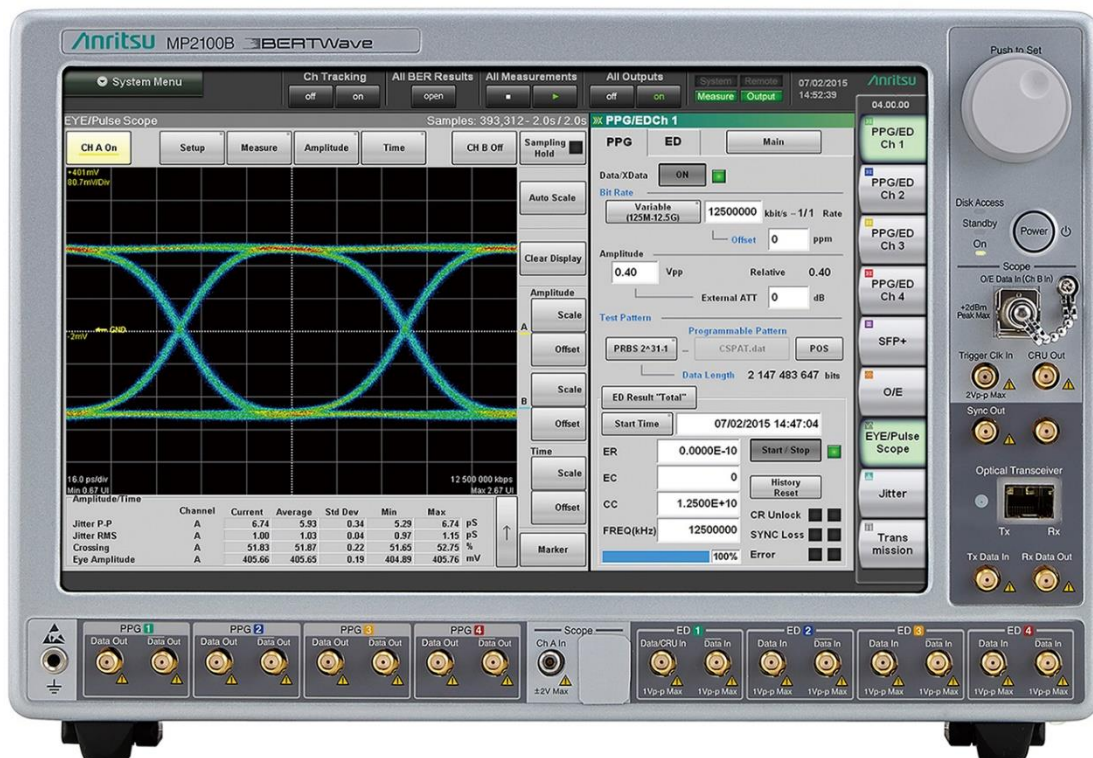
The MP2100B BERTWave supports simultaneous BER measurements and eye pattern analysis for evaluating active optical devices. The Jitter Analysis Software provides accurate jitter analysis and decomposition.

IBTA Application:

- QDR / FDR Active Cable Time Domain Testing (ATD).
- 25GHz BW Sampling Scope
- Eye Mask functions for Victim Input calibration and DUT Output measurements
- Jitter Decomposition (TJ, DJ, J2, J9, DDWPS) for Victim Input Calibration / DUT Output measurements

MP2100B - BERTWave Literature:

1. <https://www.anritsu.com/en-US/test-measurement/products/mp2100b>
2. <https://www.anritsu.com/en-US/test-measurement/support/downloads/brochures-datasheets-and-catalogs/dwl011078>



MP2100B Front View

Anritsu – MT1000A Network Master Pro

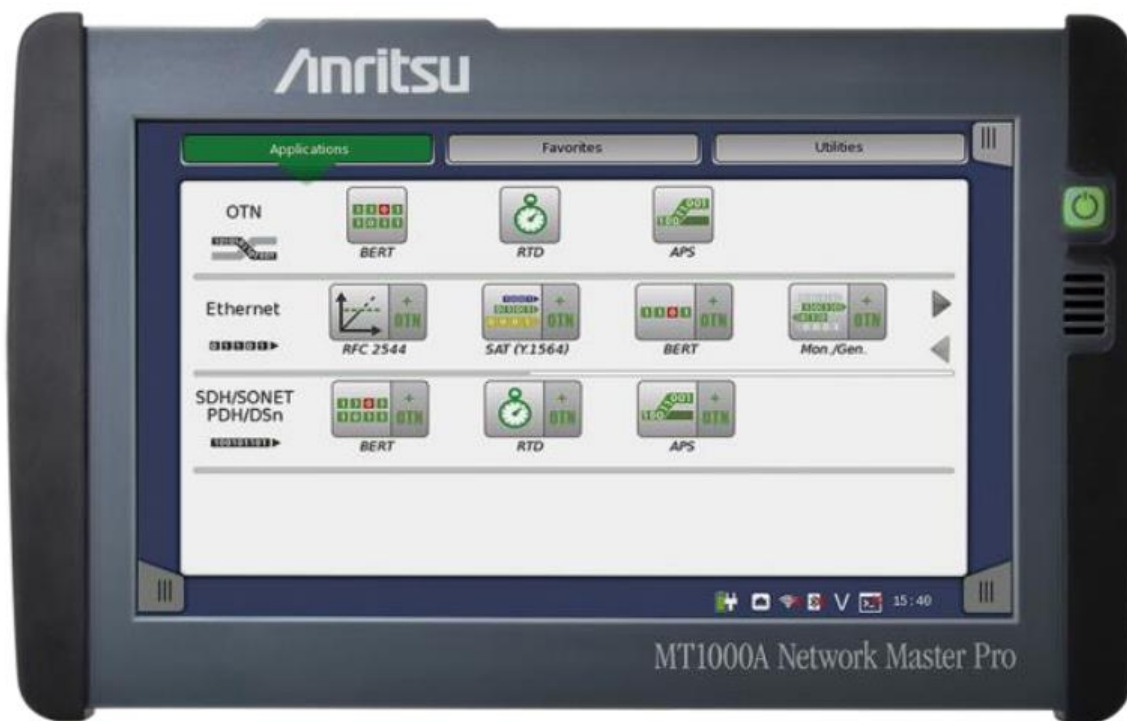
The MT1000A is an all-in-one portable tester with expandability and operability for speeds up to 100Gb/s. The compact, battery-powered and easy-to-use Anritsu MT1000A provides everything needed to install and maintain communication networks in a rugged, field portable package. This lightweight instrument simplifies the task of collecting and interpreting data with an easy-to-use GUI and clear summaries allowing users of any skill level to operate the instrument to its full potential. The MT1000A's installed MU100011A module provides the appropriate signal interfaces for testing performed at IBTA Plugfests.

IBTA Application:

- 4 Channel Pattern Generator provides required signal activity for DUTs measured on VNA Station.
- 4 Channel Pattern Generator can provide Aggressor traffic for EDR ATD Station.
- 4 Channel Error Detector can provide BER measurements for EDR ATD Station.
- **Wilder HCB used for interconnect between QSFP28 and SMA.**

MT1000A Network Master Pro Literature:

1. <https://www.anritsu.com/en-us/test-measurement/products/mt1000a>
2. <https://www.anritsu.com/en-US/test-measurement/support/downloads/brochures-datasheets-and-catalogs/dwl010587>
3. <https://www.anritsu.com/en-US/test-measurement/support/downloads/brochures-datasheets-and-catalogs/dwl010570>



MT1000A Front View

Anritsu – MT1040A Network Master Pro

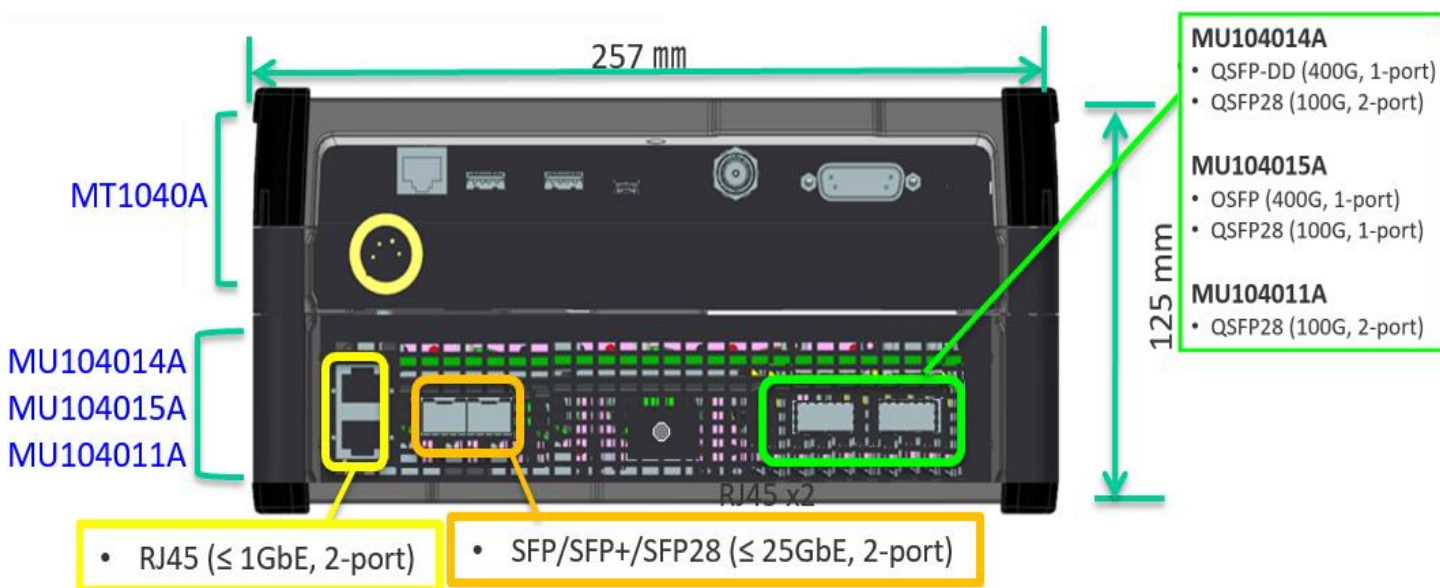
The MT1040A is an all-in-one portable tester with expandability and operability for speeds up to 400Gb/s. The compact, battery-powered and easy-to-use Anritsu MT1040A provides everything needed to install and maintain communication networks in a rugged, field portable package. This lightweight instrument simplifies the task of collecting and interpreting data with an easy-to-use GUI and clear summaries allowing users of any skill level to operate the instrument to its full potential. The MT1040A can support multiple ports of QSFP+, QSFP28, QSFP-DD and OSFP interfaces, depending on its transport module configuration (illustrated below). MT1040A mainframe will support up to 2 transport modules listed below (MU104014A / 15A / 11A)

IBTA Application:

- Dual channel 100G configurations can support EDR cable testing with FEC in a single mainframe.

MT1040A Network Master Pro Literature:

1. <https://www.anritsu.com/en-us/test-measurement/products/mt1040a>
2. <https://dl.cdn-anritsu.com/en-en/test-measurement/files/Brochures-Datasheets-Catalogs/Brochure/mt1040a-400g-brochure-e1101.pdf>
3. <https://dl.cdn-anritsu.com/en-en/test-measurement/files/Product-Introductions/Product-Introduction/mt1040a-400g-product-intro-e14101.pdf>



MT1040A Outline

Keysight - Wide-Bandwidth Equivalent-Time (Sampling) Oscilloscope (DCA-X)

The Keysight N1000A/86100D DCA-X family of oscilloscopes, together with the N1060A Precision Waveform Analyzer (aka “MegaModule”) plug-in module, has been engineered to provide precision measurements on high-speed electrical communications systems and components:

- Fast and accurate jitter/eye/analysis of NRZ and PAM4 signals
- Bandwidth: 50 GHz / 85 GHz (95 GHz typ)
- Intrinsic random jitter (RJ): 50 fs rms (typ)
- Built-in clock recovery: 150 MBd to 64 Gbd (continuous), with integrated EQ for “closed eye” analysis

The N1060A provides accurate jitter analysis, eye diagram, and waveform characterization on InfiniBand (HDR, EDR, FDR, QDR ATD Testing), Ethernet, OIF-CEI, and Fibre Channel applications to 64 Gbd.



N1000A_DCA-X_with_N1060A_module



Eye Mask, J2, J9, Time Domain



Eye Width & Height, Jitter Analysis

Links

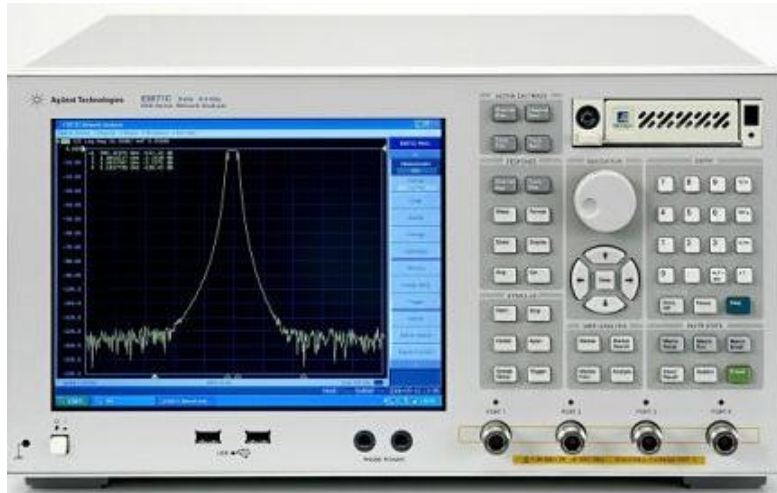
1. N1000A DCA-X Wide-Bandwidth Oscilloscope: [N1000A](#)
2. N1060A Precision Waveform Analyzer (“MegaModule”): [N1060A](#)
3. Software Compliance Applications for the DCA-X platform: [SW Apps](#)

IBTA Application: FDR/EDR/HDR HCA and Switch physical layer testing, and EDR/HDR Active Cable Time Domain testing.

Keysight - Network Analyzers

1) ENA used in FDR Cables testing

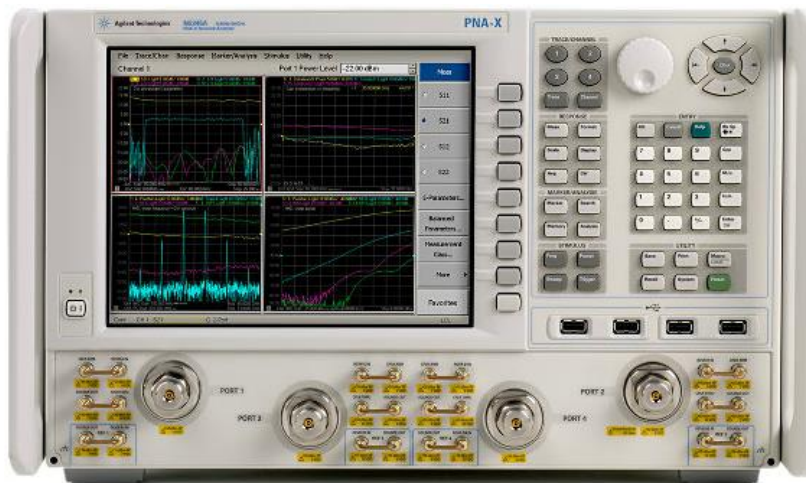
- a) [E5071C](#): 20 GHz ENA Series Network Analyzer
- b) E5071C Data Sheet: <http://literature.cdn.keysight.com/litweb/pdf/5989-5479EN.pdf>



20 GHz ENA Series Network Analyzer

2) N5244A PNA-X Microwave Network Analyzer used in EDR Cables testing

- a) [N5244A](#): 43.5 GHz ENA Series Network Analyzer
- b) N5244A PNA-X Data Sheet: <http://literature.cdn.keysight.com/litweb/pdf/N5245-90008.pdf>

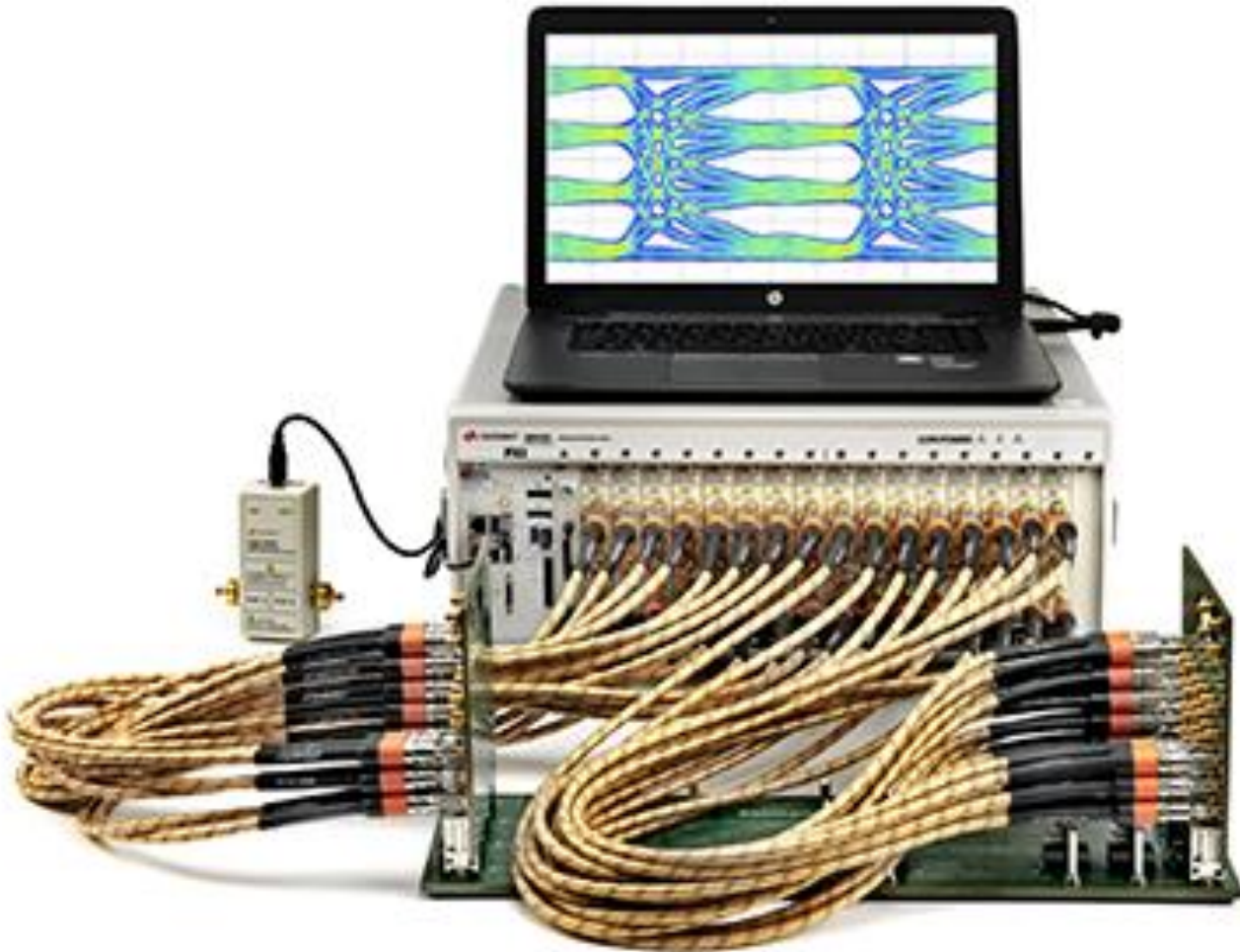


IBTA Application:

- FDR Device Physical Layer testing: SDDxx, SCCxx and SDCxx
- FDR and EDR Cable testing. ICN, ICMCN, SDDxx, SCCxx and SDCxx

3) 32 Port VNA used in FDR and EDR Cable testing since PF29

- a) [M9375A](#): PXIe Vector Network Analyzer
- b) [M9019A](#): M9019A PXIe Chassis
- c) PLTS: Physical Layer Test Suite – software to process s32p files

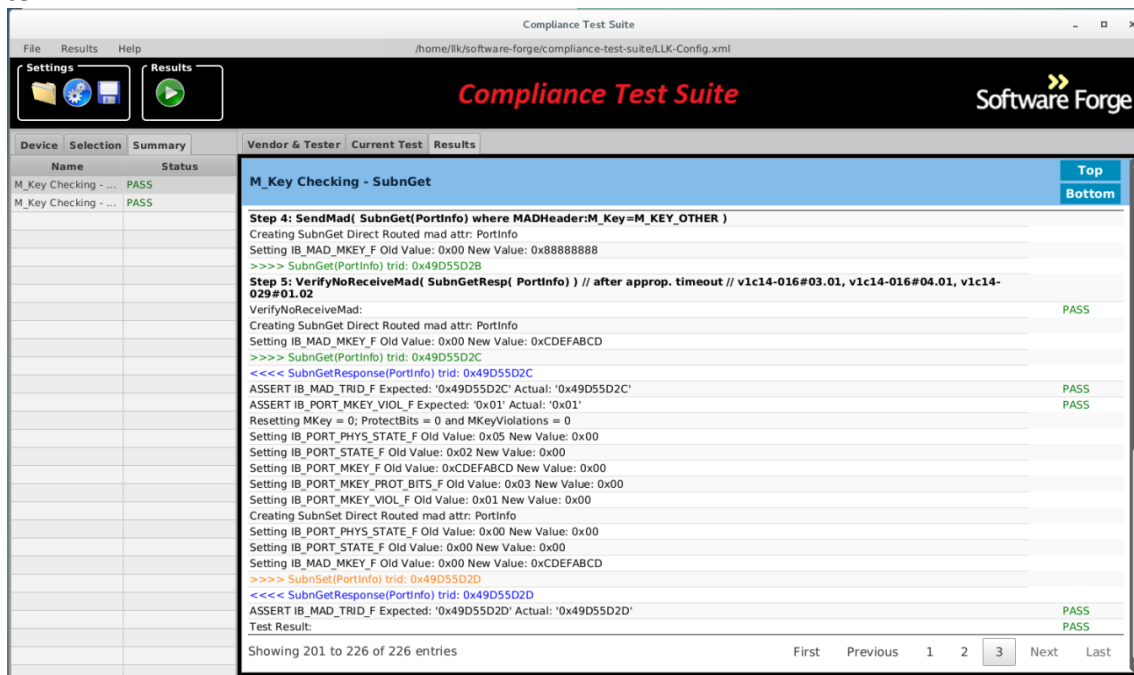


IBTA Application:

- FDR and EDR Cable testing. ICN, ICMCN, ILD, SDDxx, SCCxx and SDCxx

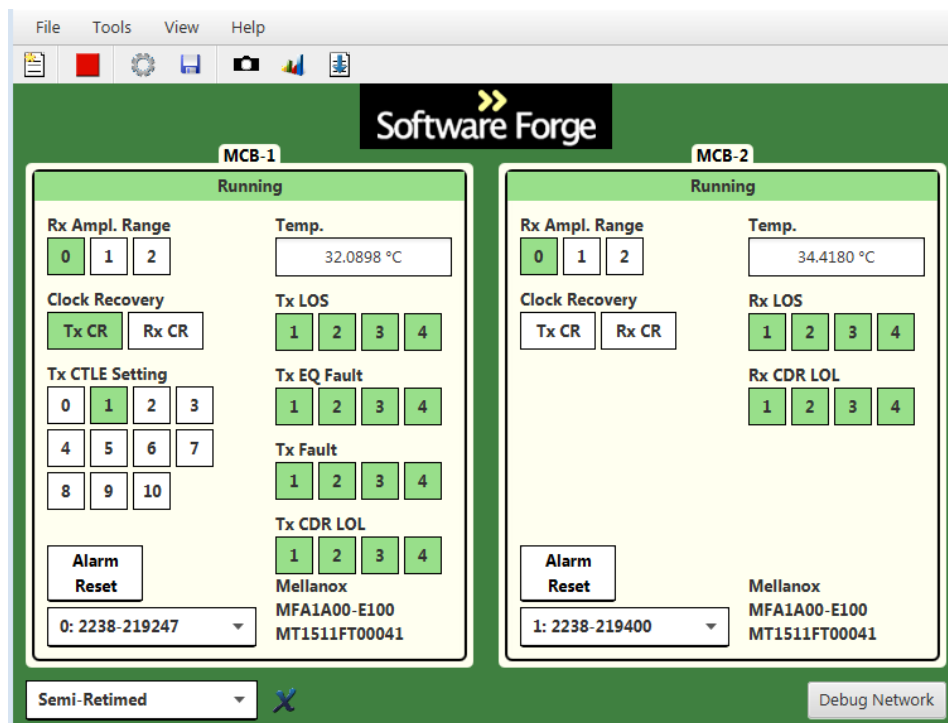
Software Forge – Compliance Test Suite (CTS)

The current version of CTS provides InfiniBand Protocol Layer testing. It is based on the Compliance and Interoperability Working Group InfiniBand Test Specification ([Volume 3](#)). This tool has replaced the old Agilent TCL test suite.



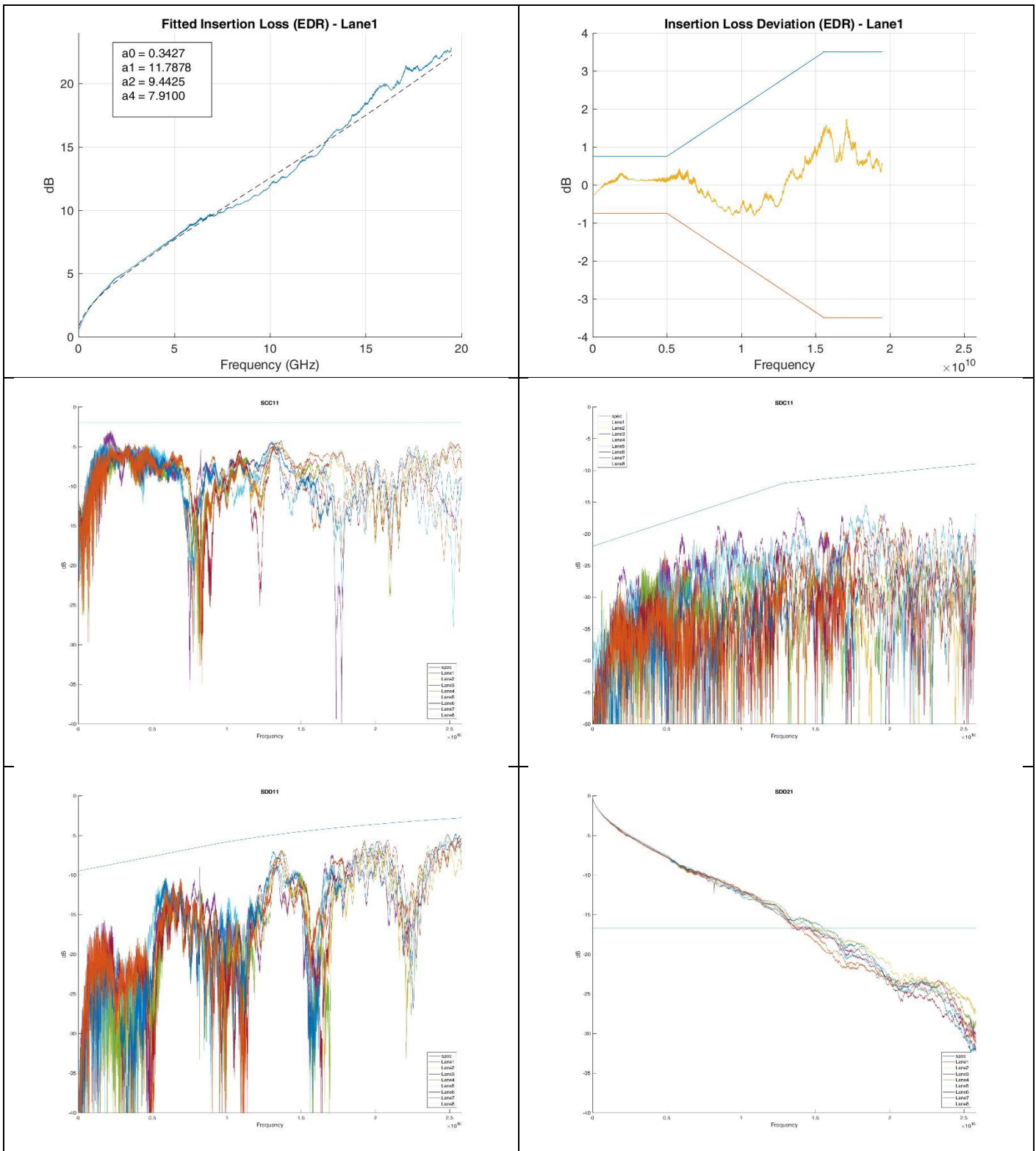
Software Forge – EEPROM Command Center (ECC)

The EEPROM Command Center is an application which enables the user to control and monitor the status of the QSFP memory maps. The user can write to writable fields of the QSFP memory map and easily export summaries of the results.



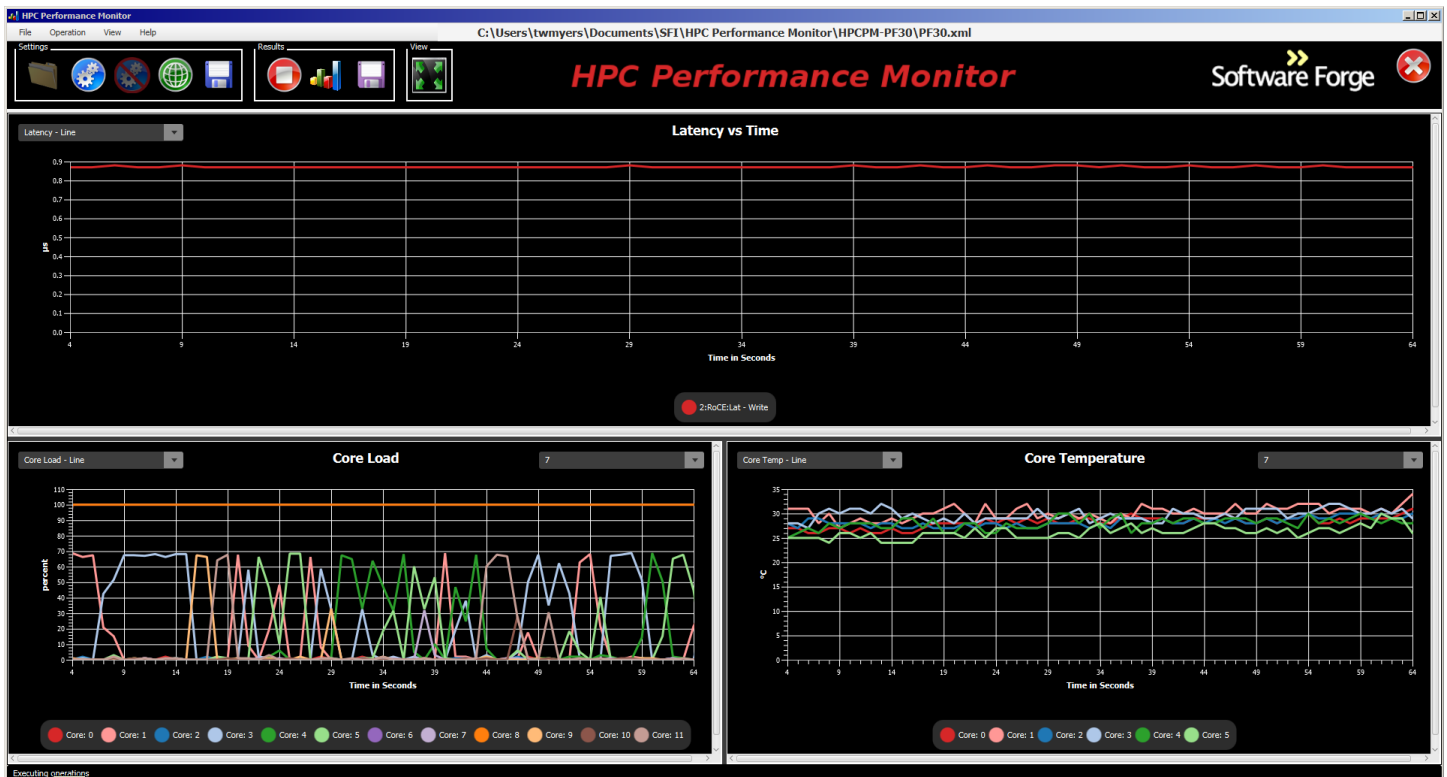
Software Forge – Vector Network Analyzer (VNA) MATLAB Application

This Application analyzes and processes the s32p VNA data so that the results are available immediately after the data is collected. This has helped reduce the data analysis time from months to minutes.



Software Forge – High Performance Computing – Performance Monitor ([HPC-PM](#))

The High Performance Computing – Performance Monitor (HPC-PM) measures network performance of RDMA and/or TCP connections. The tool can be used for network diagnostics as well as engineering.



Total Phase

I2C/SPI Host Adapter Test fixture

The Aardvark I2C/SPI Host Adapter is a fast and powerful I2C bus and SPI bus host adapter through USB. It allows a developer to interface a Windows, Linux, or Mac OS X PC via USB to a downstream embedded system environment and transfer serial messages using the I2C and SPI protocols.



<http://www.totalphase.com/products/aardvark-i2cspi/?gclid=ClzW2sDjg8QCFWQV7Aod3RwAvA>

EEPROM Programming Kit

Total Phase has bundled together a complete set of development tools and accessories that allow developers to erase, program, and verify serial EEPROMs.



<http://www.totalphase.com/catalog/product/view/id/24/s/eeprom-devkit/category/4/>

IBTA Application: Used to program EEPROM cable modules when doing ATD testing and in general for reprogramming EEPROMs as needed.

Ace Unitech – Variable ISI Channel

CLE-1000-S2

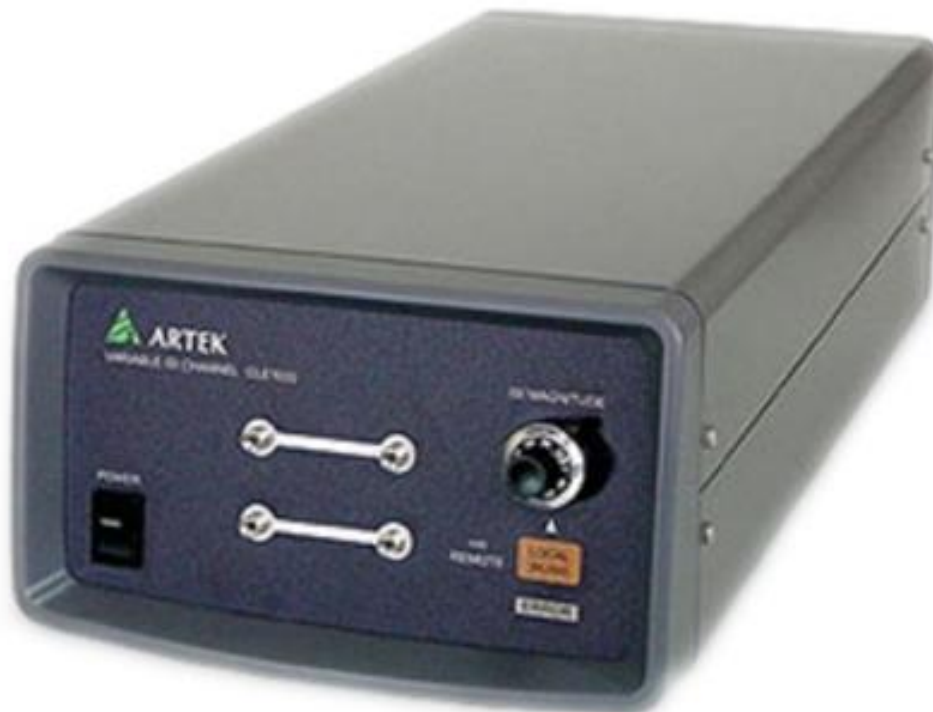
Designed as a variable Inter-Symbol-Interference (ISI) channel for high speed serial interface stress tests. It controls the insertion loss continuously at 0.1% step (1,000 steps) in its dynamic range for fine adjustment. The differential transmission lines are totally passive and DC coupled. The adjusted insertion loss amount is reliably repeatable and stable for secure test results. The control is done by the volume dial on the front panel and/or PC remote via USB for automated calibration. Three (3) models of different loss range are prepared to cover various data rates. 4ch versions are also available. The CLE1000 is a convenient ISI channel, applicable for various standard stress tests and compliance tests.

IBTA Application:

- EDR Active Cable Time Domain Testing (ATD)
- Precise adjustment of frequency-dependent input channel loss.

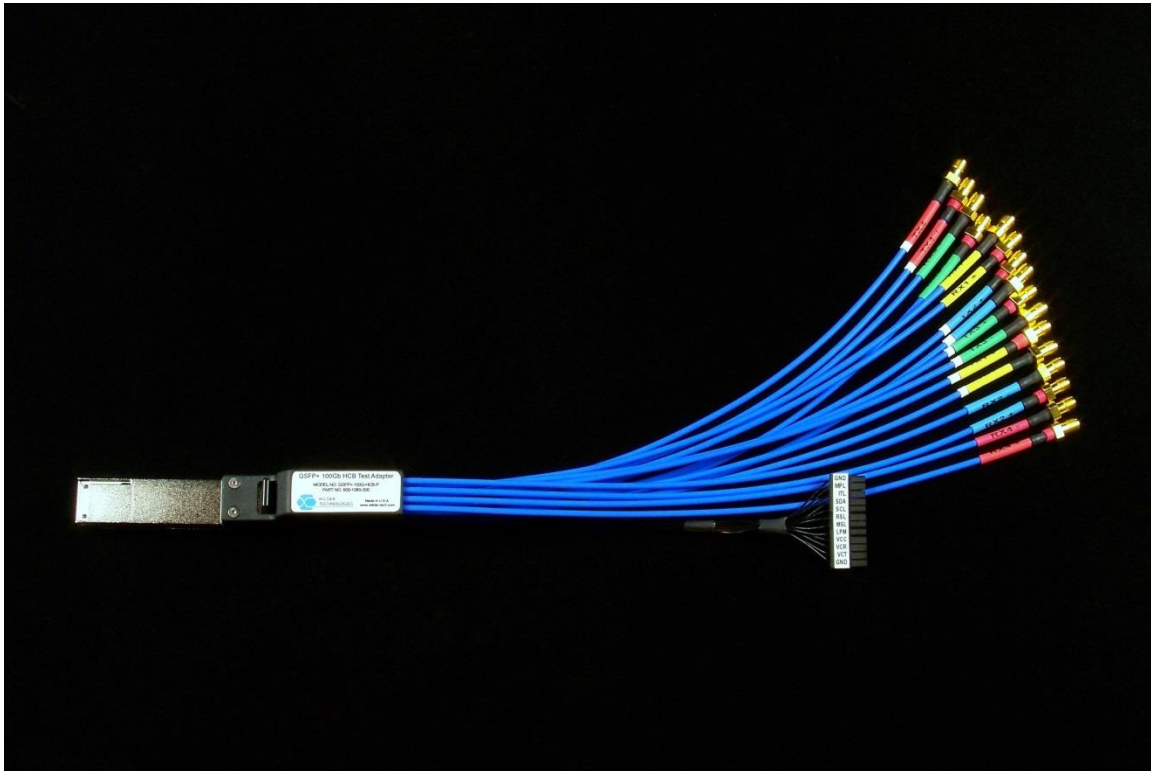
CLE-1000-S2

1. <http://www.aceunitech.com/index.html>
2. http://www.aceunitech.com/docs/support/cl1000_datasheet.pdf

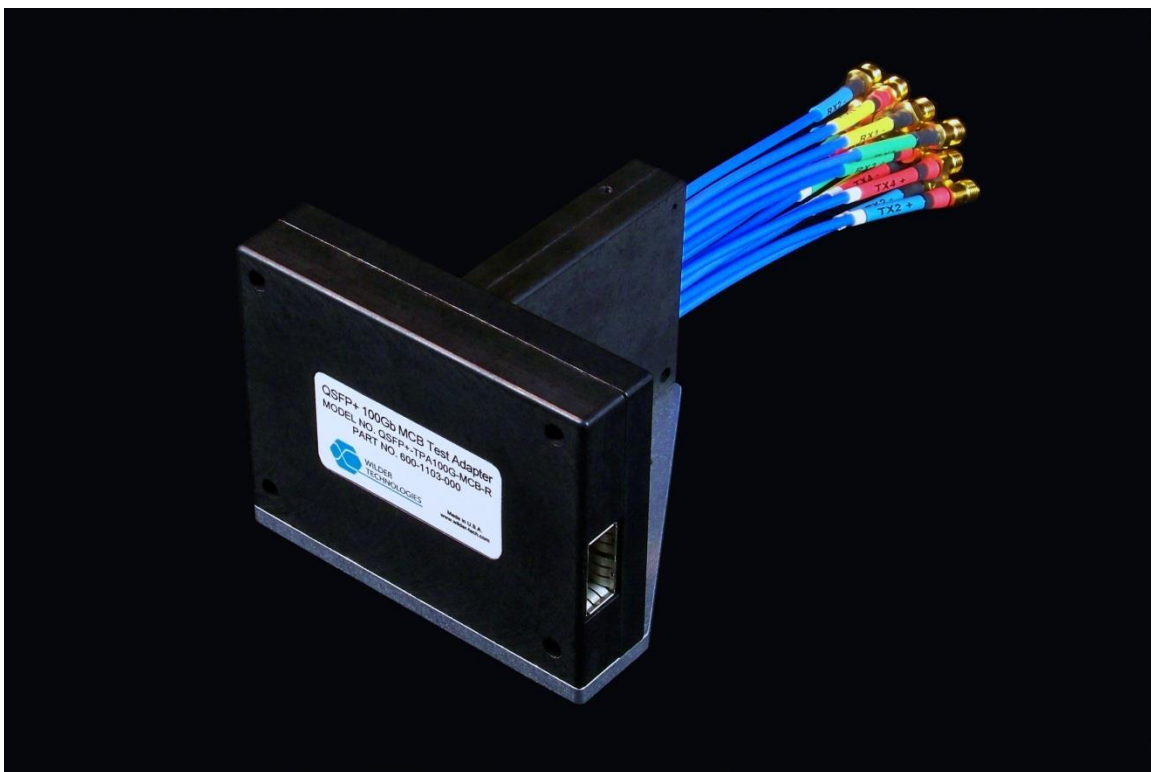


CLE-1000-S2 Front View

Wilder QSFP28 Test fixture: <https://www.wilder-tech.com/en/products/datacomm#qsfp-28>

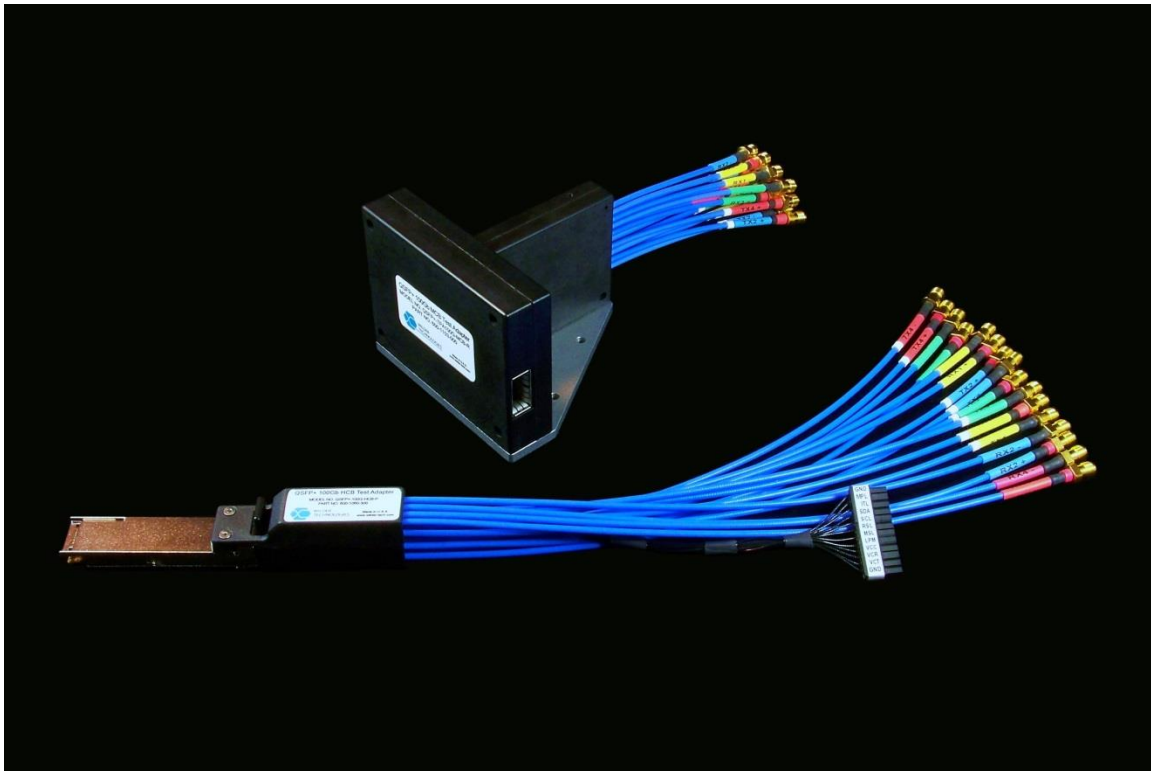


Wilder QSFP28 Host Compliance Board (HCB)



Wilder QSFP28 Module Compliance Board (MCB)

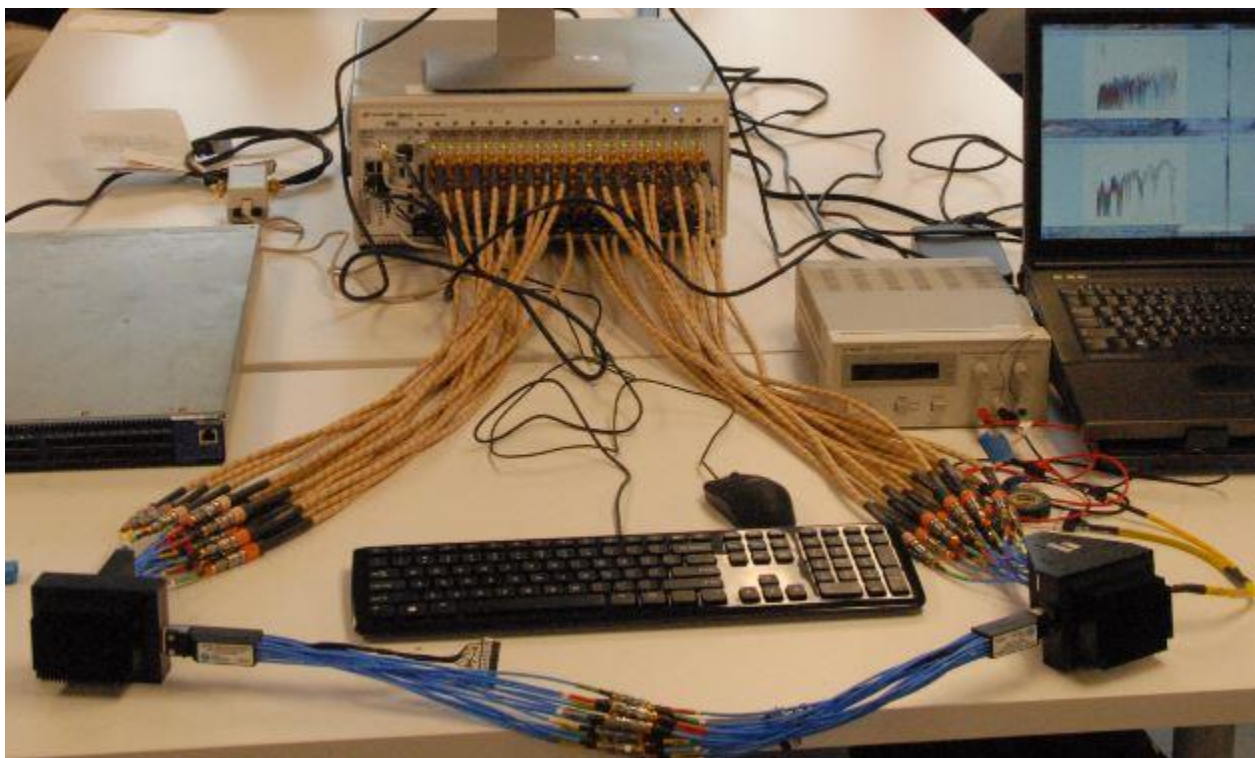
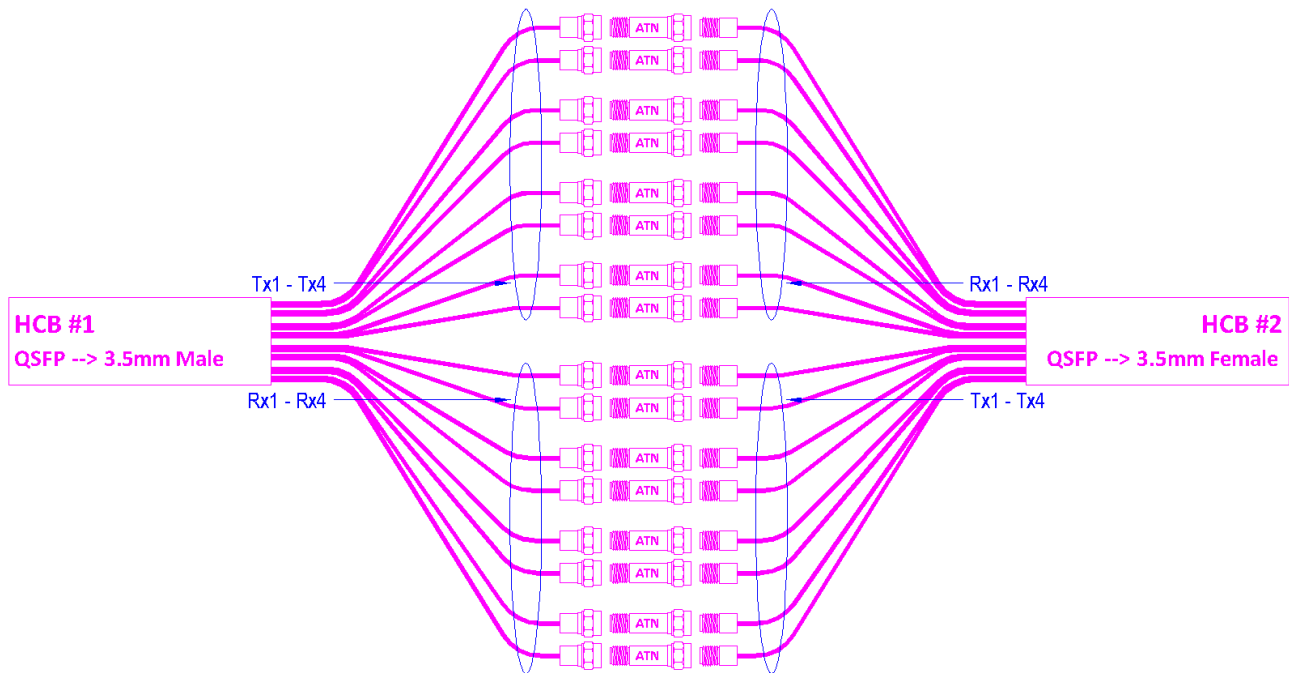
Wilder QSFP28 Test fixture: <https://www.wilder-tech.com/en/products/datacomm#qsf-28>



IBTA Applications:

- Wilder HCB
 - QDR, FDR, EDR and HDR device physical layer testing
 - QDR, FDR, EDR and HDR Active Cable Time Domain testing
- Wilder MCB
 - QDR, FDR, EDR and HDR Active Cable Time Domain testing
 - QDR, FDR, EDR and HDR VNA testing

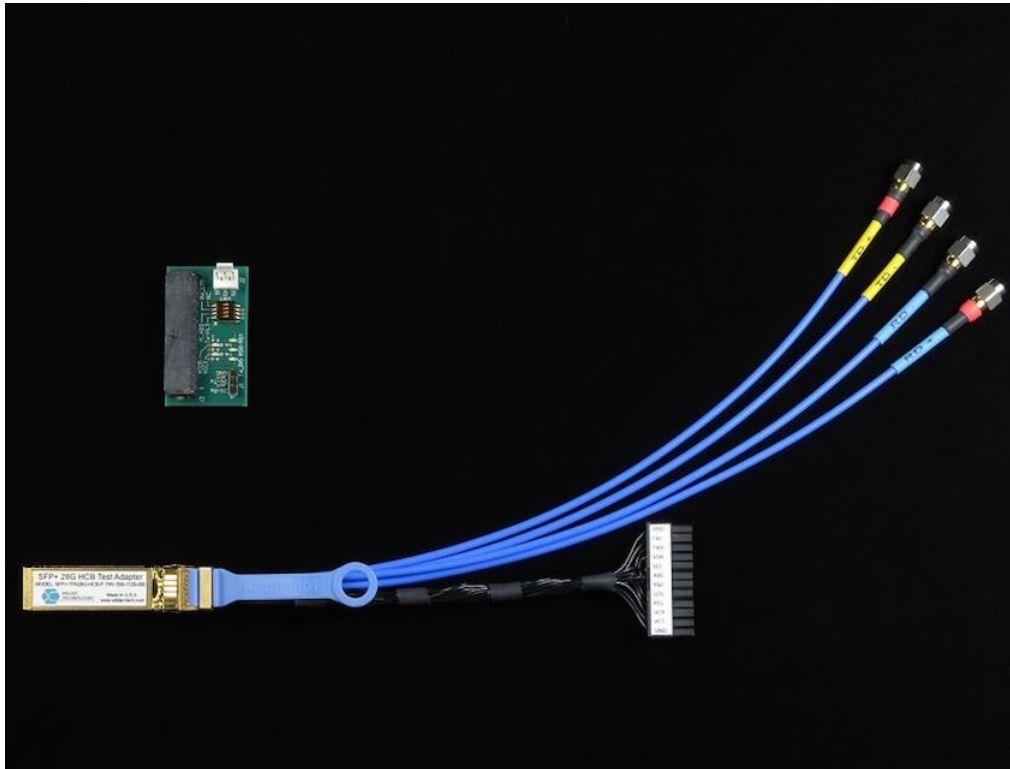
Wilder Dual Headed HCBs for VNA MCB verification



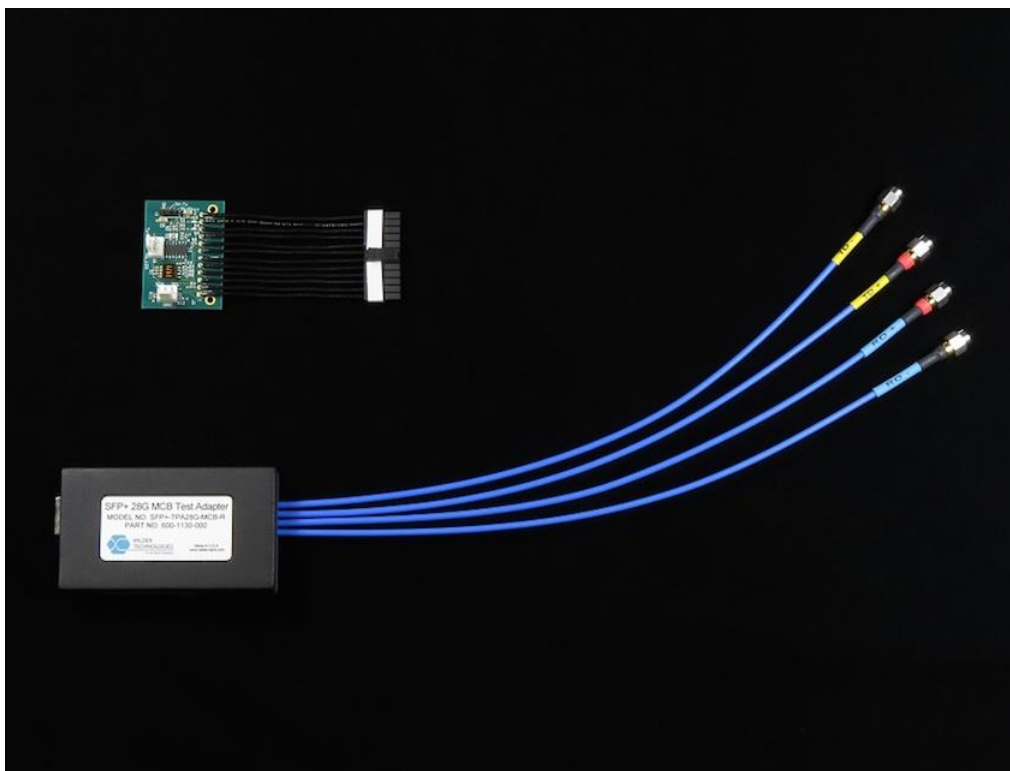
IBTA Application:

- Wilder Dual HCBs with 10 dB Attenuators used for VNA fixture validation

Wilder SFP28D Test fixture: <https://www.wilder-tech.com/en/products/datacomm/sfp-28>

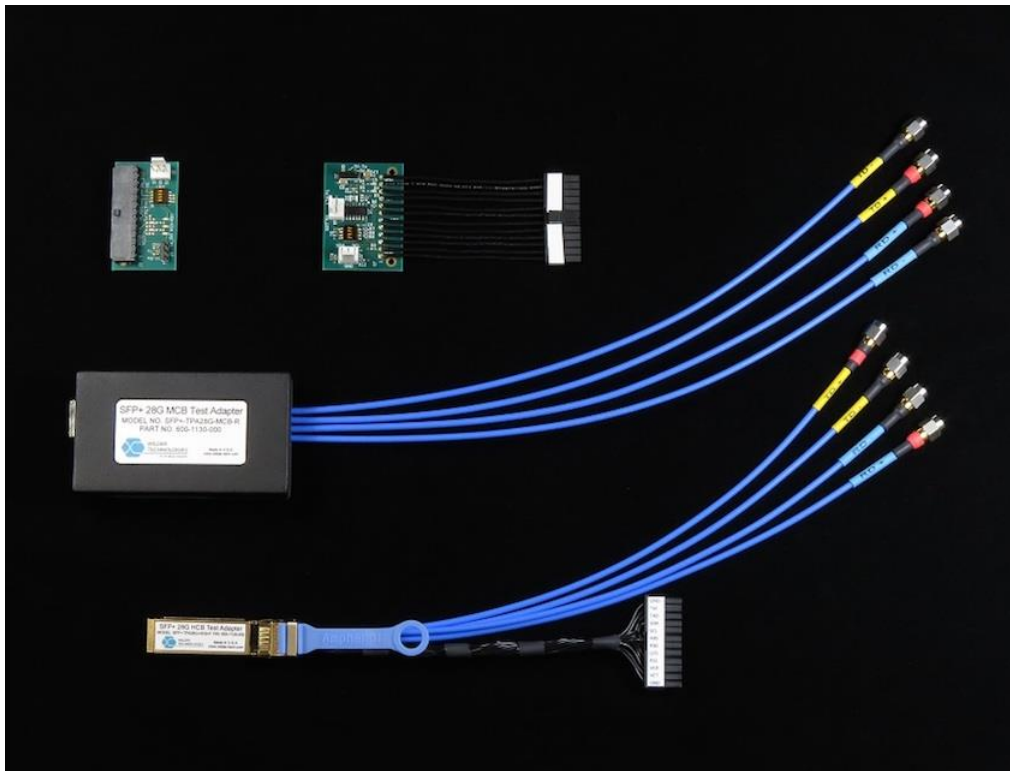


Wilder SFP28 Host Compliance Board (HCB) and HCB Switch Module



Wilder SFP28D Module Compliance Board (MCB) and MCB Switch Module

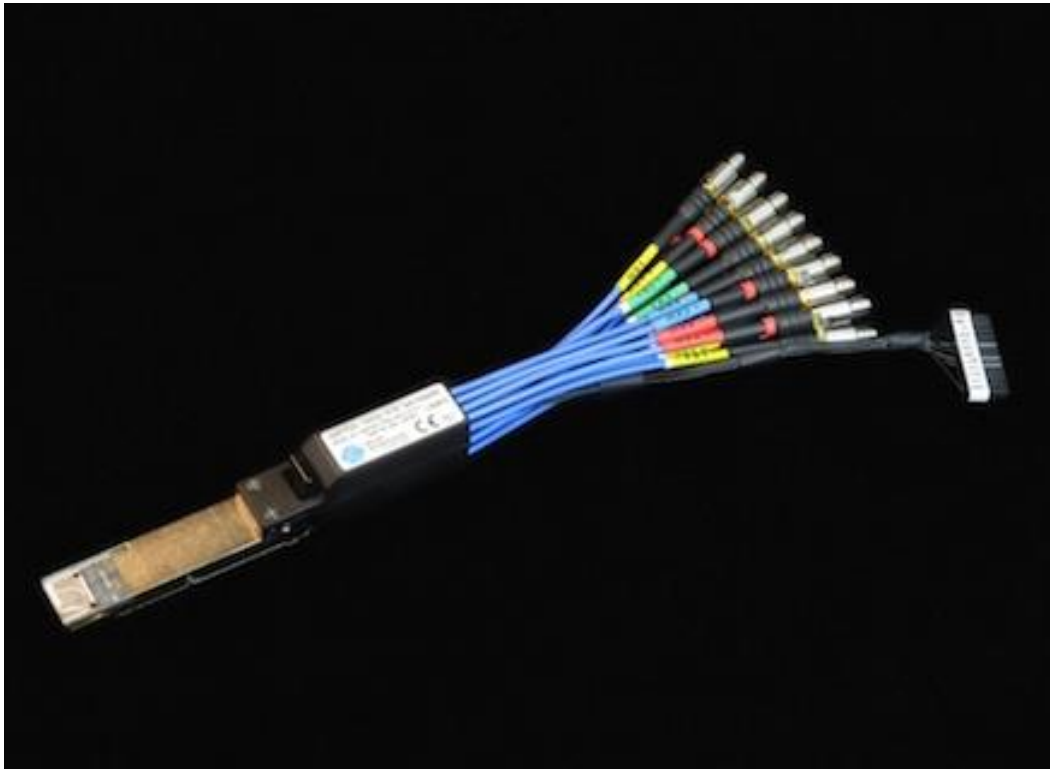
Wilder SFP28D Test fixture: <https://www.wilder-tech.com/en/products/datacomm/sfp-28>



IBTA Applications:

- Wilder HCB
 - Port type 2
 - QDR, FDR, EDR and HDR device physical layer testing
 - QDR, FDR, EDR and HDR Active Cable Time Domain testing
- Wilder MCB
 - Port type 2
 - QDR, FDR, EDR and HDR Active Cable Time Domain testing
 - QDR, FDR, EDR and HDR VNA testing

Wilder QSFP28-DD fixture: <https://www.wilder-tech.com/en/products/datacomm#qsfpdd>



Wilder QSFP-DD Host Compliance Board (HCB)



Wilder QSFP-DD Module Compliance Board (MCB)

Wilder OSFP Test fixture: <https://www.wilder-tech.com/en/products/datacomm#osfp>



Wilder OSFP Module Compliance Board (MCB)



Wilder OSFP mated Module Compliance Board (MCB) and Host Compliance Board (HCB)

Physical layer Test Equipment Methods of Implementation ([MOI](#))

IBTA Active Time Domain (ATD) Testing for [FDR](#) Cables

- [Anritsu ATD MOI for Active FDR Cables](#)
- [Tektronix ATD MOI for FDR Active Cables](#)

IBTA Active Time Domain (ATD) Testing for EDR Cables

- [Anritsu ATD MOI for Active EDR Cables](#)

IBTA VNA Testing for FDR and EDR Cables

- [Keysight 4 Port VNA Testing](#)
- [Keysight 32 Port VNA Testing](#)

IBTA Testing for FDR Devices (HCAs and Switches)

- [Agilent Transmitter MOI](#)
- [Agilent-Anritsu Receiver MOI](#)

Protocol Layer Test Equipment used in the IBTA Plugfests

InfiniBand Protocol Analyzers

- LeCroy IBTracer 4x - SDR
 - <http://www.lecroy.com/protocolanalyzer/protocoloverview.aspx?seriesid=128>
- Mellanox ibdump used with Wireshark
 - http://www.mellanox.com/page/products_dyn?product_family=110&mtag=monitoring_debug
 - <http://www.wireshark.com/>

Software Tools to test Systems and interconnects

- Software Forge [EEPROM Memory Map](#) test suite
- Software Forge [Cable Interoperability](#) test suite
- Software Forge [Compliance Test Suite \(CTS\)](#)
 - a) IB Protocol Layer Tester
 - b) RoCE Transport Tester

Compliance & Interoperability Testing - IBTA Integrators List

- <https://www.infinibandta.org/integrators-list/>
- This site includes a list of all the devices and cables that have passed both the Physical and Protocol Layer testing from June 2003 through April 2020.

Information about the InfiniBand Trade Association ([IBTA](#))

- **Main IBTA Website Link:**
 - <http://www.infinibandta.org/>
- **Membership Link:**
 - <https://www.infinibandta.org/membership/>
 - <https://www.infinibandta.org/about-the-ibta/>
- **Presentations, Events and Information:**
 - <https://www.infinibandta.org/press-room/>
- **IBTA Specifications:**
 - https://cw.infinibandta.org/wg/Members/home/Member_Specifications
 - Volume 1 – this is the protocol layer spec that covers from Layer 3 and up.
 - Volume 2 – this covers Layers 1-2. The updated draft includes all the specs for FDR.
 - Volume 3 – this is the test specification. There are many more test documents that are only available to the Compliance and Interoperability Working Group Members (CIWG)
 - Annex A 16: RoCE
 - Annex A 17: RoCEv2
 - Annex A 18: Virtualization
- **IBTA Working Groups**
 - <https://cw.infinibandta.org/workgroup/index>
 - Compliance and Interoperability Working Group
 - ElectroMechanical Working Group
 - Link Working Group
 - Management Working Group
 - Marketing Working Group
 - Software Working Group
 - Steering Committee
 - Technical Working Group
- **IBTA Roadmap:**
 - <https://www.infinibandta.org/infiniband-roadmap/>
- **IBTA Integrators' List Program:** (some links require membership)
 - Integrators' List
 - <https://www.infinibandta.org/integrators-list/>
 - IL Policy
 - <https://cw.infinibandta.org/wg/CIWG/document/8298>
 - Plugfest Information:
 - <https://www.infinibandta.org/plugfest/>
- **Test Methods of Implementation**
 - <https://www.infinibandta.org/methods-of-implementation/>